

Build guide – Under Desk Drawer (Copacetic)

Rotatable, attractive drawer by cermy.

Main features:

- rotatable
- modern design
- more height options
- more possibilities of use
- ideal for storing office supplies
- strength and durability
- easy to assemble

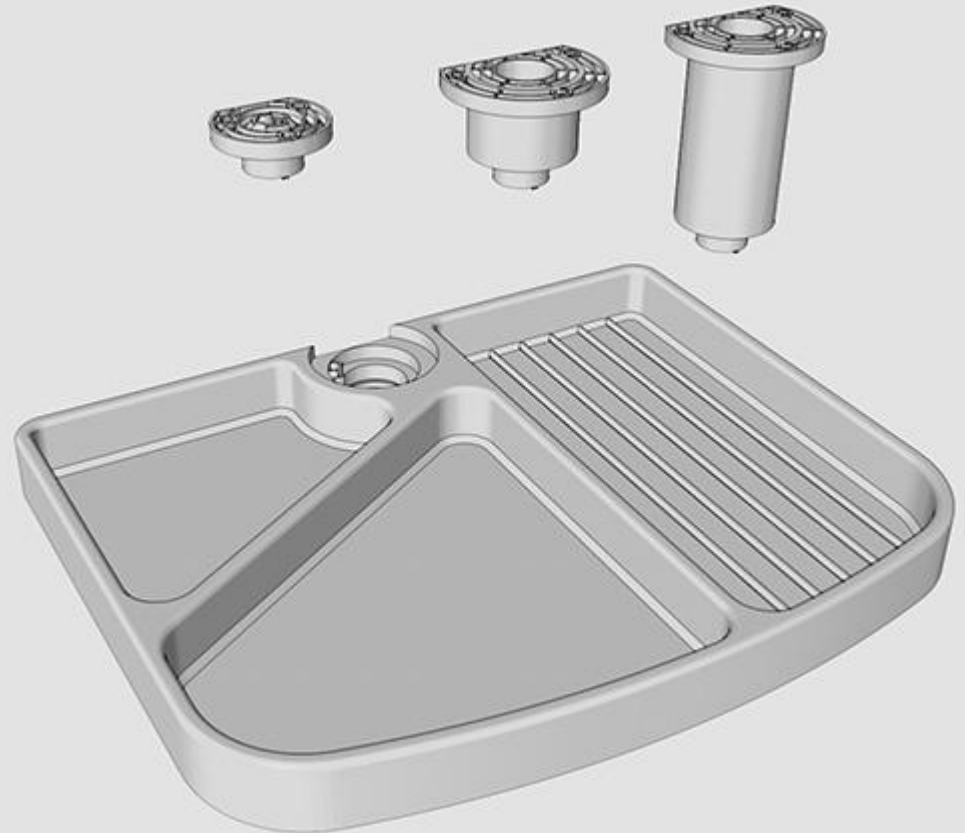
[Current build guide here](#)

[Parts to download here](#)

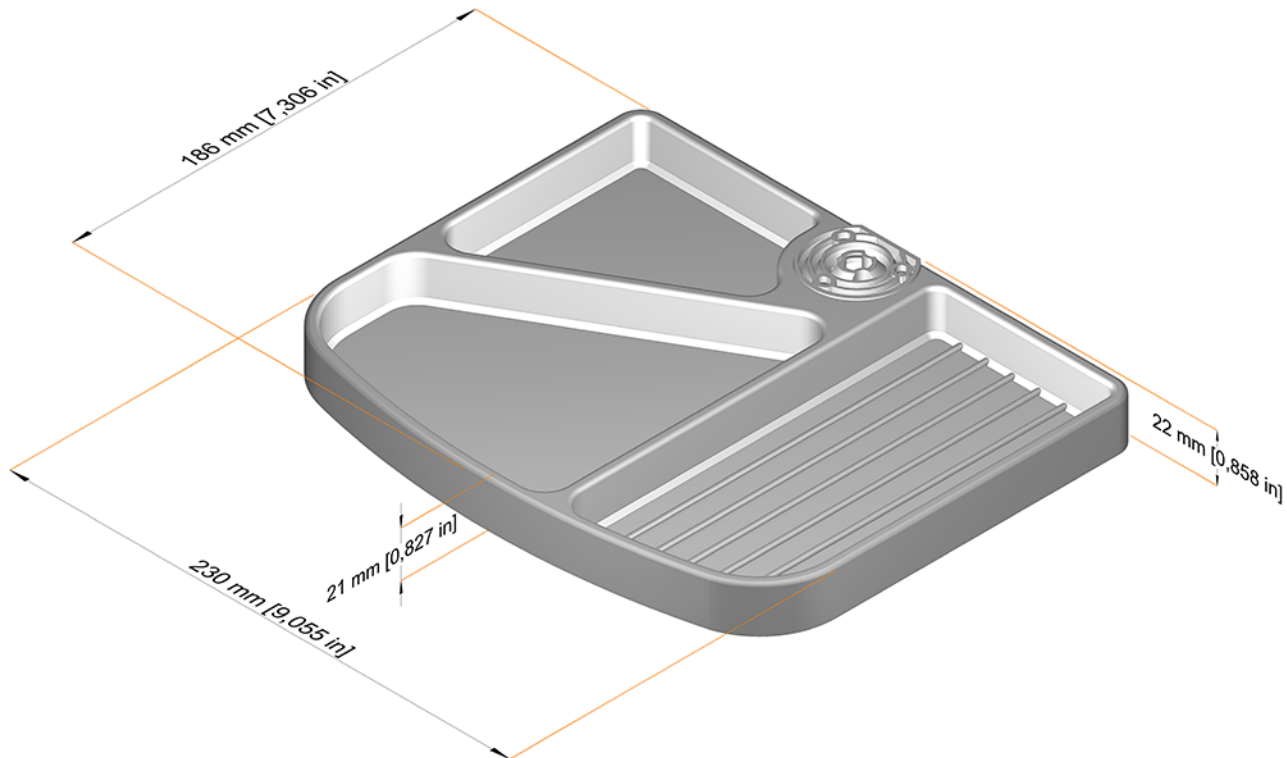
cgtrader.com

cults3d.com

Or alternative here
cermy.cz



Dimensions revolving drawer



This drawer is originally created as an accessory for a popular **Pedestal under the monitor** which you can buy separately.

cgtrader.com

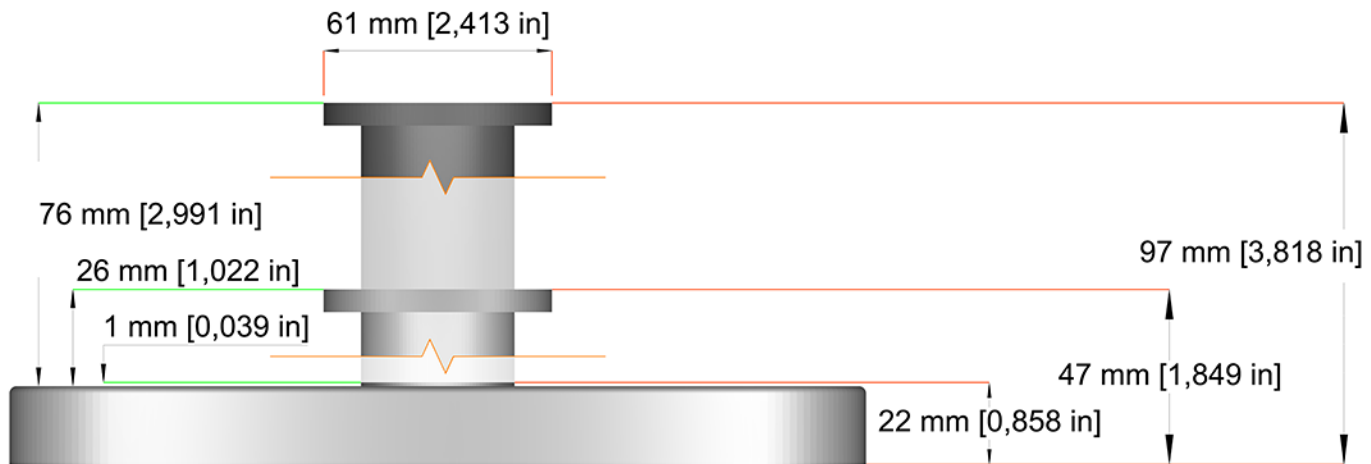
cults3d.com



Many other uses of the revolving drawer offer the upper pivot in different heights. Three basic heights upper pivot are prepared.

You can easily adjust the height of the upper pivot in different CAD programs as needed.

Dimensions upper pivot



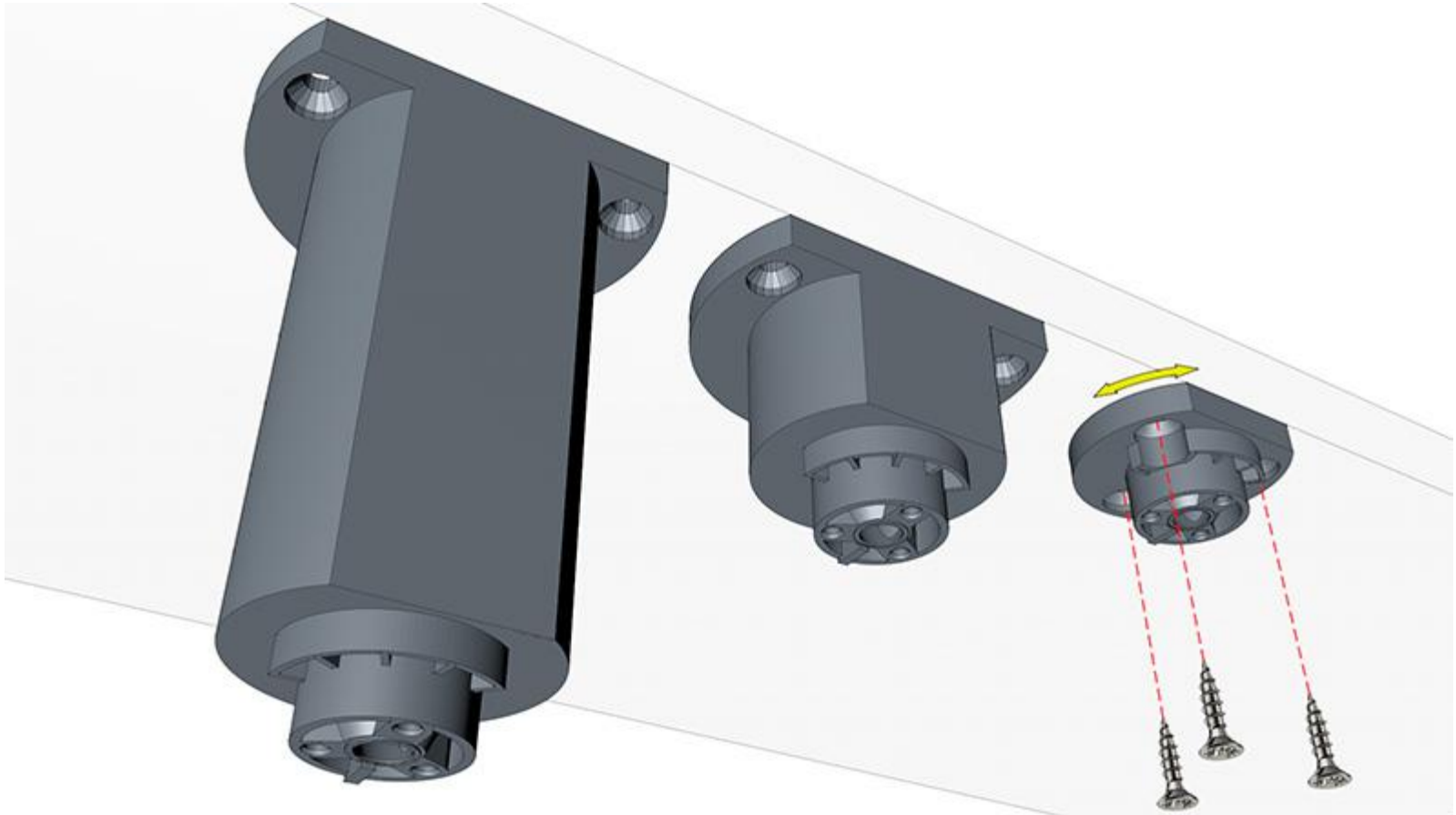
Under Desk Drawer assembly - step 1

You need 3 wood screws 3 x16 mm.

Choose the length of the upper pivot according to the needs of your project.

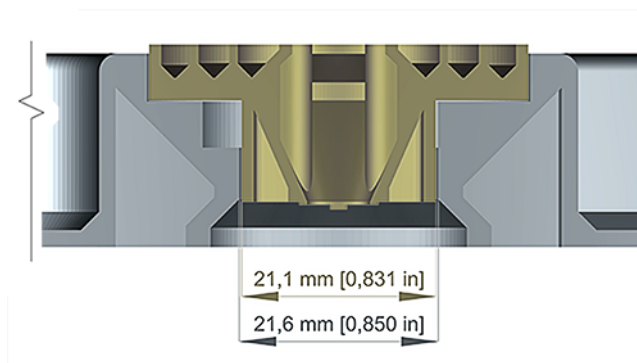
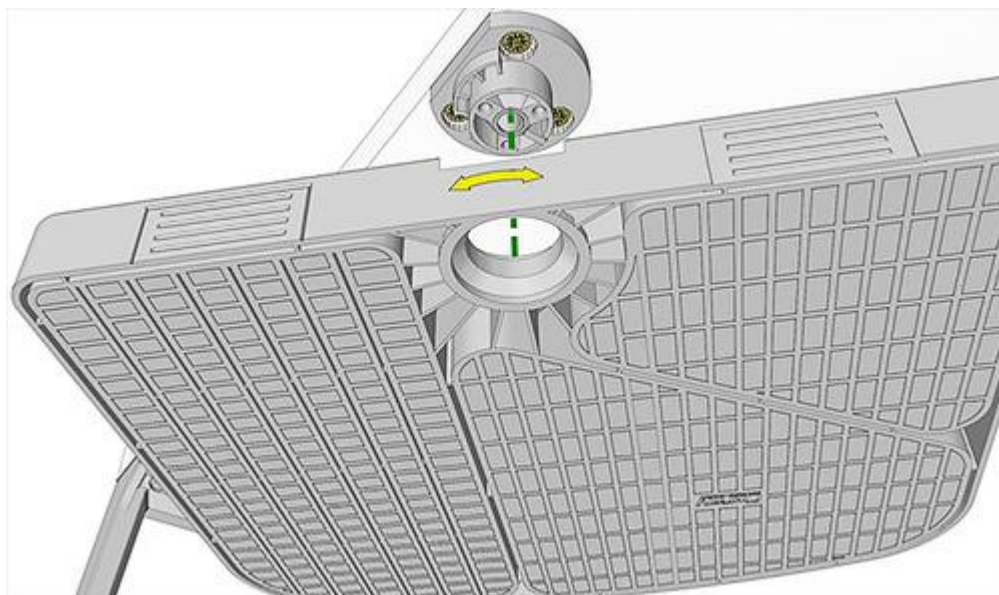
Place the pivot on the plate.

The pivot can be turned slightly so that it is precisely positioned with the edge of the board



Under Desk Drawer assembly - step 2

Turn the drawer 45 degrees as shown in the picture and try to fit it on the upper pivot .



Correct pivot diameter is 21.1mm (0.831 in). The opening in the drawer is 21.6mm (0.850 in).

If the dimensions are different, there are several ways to fix it.

If the drawer does not turn easily, use fine sandpaper and carefully sand the hole in the drawer.

Diameter upper pivot is large. Printer may be adding too much material. You softly reduce the flow rate.

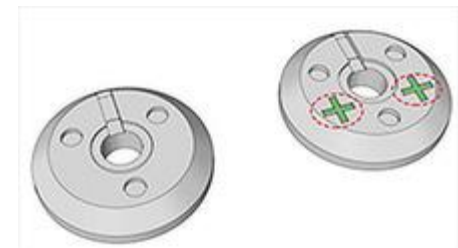
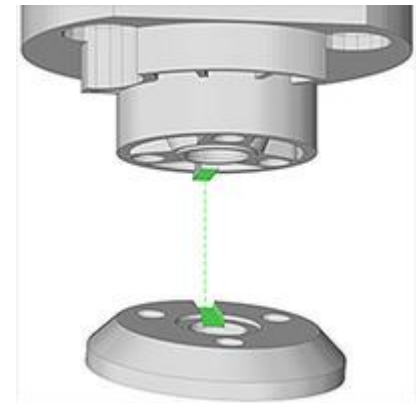
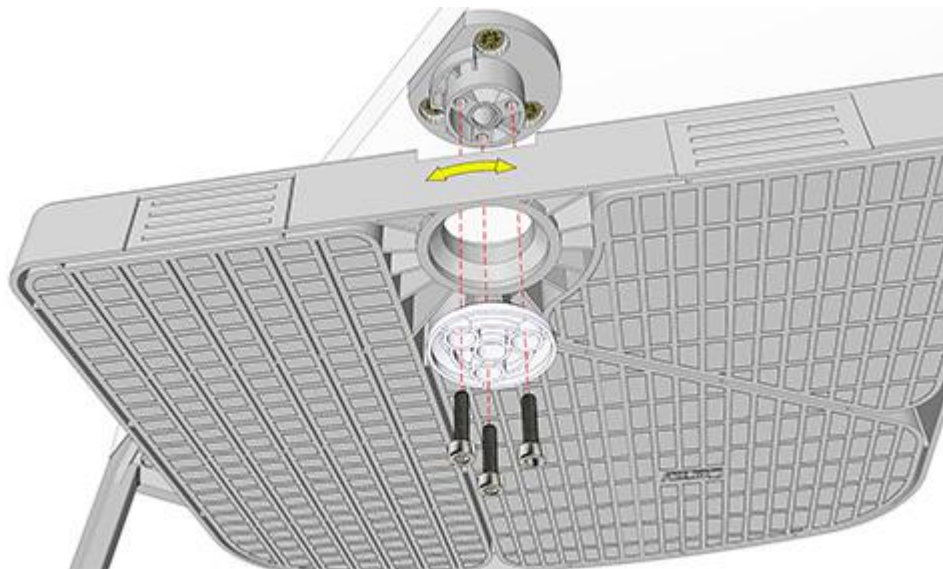
If these simple solutions do not help, it is best to calibrate the printer again.

As a last resort, use the upper pivot size adjustment



Under Desk Drawer assembly - step 3

Drill the holes in the lower pivot first. Use a Drilling Tool as an aid.
Turn the lower pivot exactly against the upper pivot so that the rabbets align exactly.
3x screws M3x8 are enough for attachment. You can also use a longer one.



If the drawer stops rotating freely, you have another option to fix it.
For free rotation, use the lower pin with the marker +. Its height is + 0.15mm. The tension should be released.
If that didn't help, calibrate the printer or adjust the extrusion.

Under Desk Drawer – finished



Your product is ready . I believe that this product will serve you well for a long time

